

***BEST PRACTICES BY GC
NETWORKS***

INDIA

By

Dr. Uddesh Kohli

September 22, 2005

Barcelona

GLOBAL COMPACT IN INDIA

- **Launch meeting in Mumbai in December 2000**
- **20 top CEOs**
- **Steering Committee of CEOs in 2001**
- **Informal Networks in New Delhi & Mumbai – September 2001**
- **About 100 companies enrolled for Global Compact**

GLOBAL COMPACT IN INDIA

- **Also, Professional Bodies like :**
 - **AIMA – All India Management Association**
 - **ISTD – Indian Society for Training & Development**
 - **CDC – Consultancy Development Centre**
 - **TERI- The Energy Research Institute**
- **And Industry Bodies like :**
 - **CII – Confederation of Indian Industry**
 - **FICCI – Federation of Indian Chambers of Commerce & Industry**
 - **CIDC – Construction Industry Development Council**

GLOBAL COMPACT SOCIETY

- **Formed in November, 2003 by GC participating organizations with Memorandum & Articles of Association**
- **Registered as Non-Profit Society**
- **Membership of GCS Open to – Corporates, Associations/Institutions, SMEs, NGOs, Labour Organizations, who commit to participate in the GC Programme**
- **Annual Subscription to be paid by Members – separate rates for different categories of members,**
- **Accounts of GCS subject to Audit**

GLOBAL COMPACT SOCIETY

- **Governing Council with 15 members, including 4 Vice Presidents, Secretary, Treasurer – elected by Members**
- **Focal Point for interaction with UN GC Office is a member of Governing Council**

GCS – MAIN ACTIVITIES

- **National Convention – July 2004 (jointly with FICCI)**
- **Regional Conclave – March 2005 (jointly with CII, Tata Steel)**
- **About 300 participants in each**
- **Meetings**

GCS – MAIN ACTIVITIES (CONTD.)

- **Networking, Exchange of information and experience, interaction, workshops/training, follow up on Communication of Progress (COP), creating awareness for GC Programme, contacting Corporates and other organizations and encouraging them to join GC Programme and become members of GCS**
- **Chapters planned in major cities/regions for closer interaction and activities at the local level**



SOME EXAMPLES OF CORPORATE INITIATIVES

INDIAN OIL CORPORATION

- **Implemented all principles of GC**
- **0.75% of net profit for CSR – Rs. 100 million for Indian Oil Foundation for national heritage, of the rest :**
 - **35% national causes/calamities**
 - **30% community development**
 - **20% education – scholarships**
 - **15% - other activities**

TATA STEEL

- **Human Rights**
 - **Health, education, civic infrastructure, 700000 people**
- **Labour**
 - **75 years of labour harmony**
 - **Benefits, welfare since 1915**
- **Environment**
 - **Planted 1.6 million trees – 100% treatment of waste water**
 - **Among 100 companies worldwide by Sustainability International**



NATIONAL THERMAL POWER CORPORATION

- **45 schools for 45000 children**
- **17 hospitals with 700 beds**
- **Community infrastructure**
- **Comprehensive CSR Policy – 0.5% of profit allocated to CSR**

INDIAN ALUMINIUM LTD.

- **CSR Policy – Quality of Life**
- **Sustainable Livelihood to tribal population in Lohardaga**
- **Upgrading skills of persons in Agriculture and other skills**
- **Partnership with Govt/NGOs**

HINDUSTAN LEVER LTD.

- **Project Shakti – Empower rural women with income generating**
- **Activities - 6200 women covered**
- **Water conservation & harvesting**
- **Education and career opportunities for girl students**

NATIONAL MINERAL DEVELOPMENT CORP.

- **Education – 27 schools in villages**
- **Free – indoor treatment for 5500 and outdoor for 50,000 tribal patients**
- **Drinking water for villages**
- **Skill Building**

ITC

- **E-chaupal – Portal links to farmers in 15 states – Supply of inputs, marketing of outputs, Real time prices**
- **Empowering women through vocational training in Maharashtra**

BHARAT HEAVY ELECTRICALS

- **Centres for vocational training**
- **Adopted villages to develop infrastructures**
- **Institutions for mentally and physically challenged**
- **GC internalized – All Levels involved, Mission, Objectives, workshops**

LAFARGE INDIA

- **Low Cost Housing on a large scale**

ICICI BANK

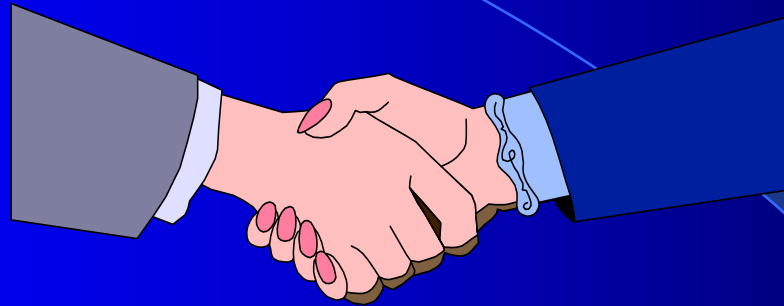
- **Micro Finance**
- **ATM Kiosks in rural areas**

HINDUSTAN PETROLEUM LTD.

- **Community kitchens – cooking at very low cost, self managed by users**

Why Companies Join UN-G C

- Global Network/platform for learning, experience sharing, using UN's Global reach**
- Framework for countering criticism of free markets, new technologies**
- Better image of a GC Company**
- Enlightened self interest - Demonstration of social commitment through GC**
- More organized joint effort towards CSR**



Thank You