



# TURKISH CHEMICAL INDUSTRY'S RESPONSIBLE CARE<sup>®</sup> INITIATIVE

16 YEARS of  
IMPLEMENTATION in TURKEY  
1993-2009

**Dr. Caner Zanbak**

*Environmental Advisor, Turkish Chemical Manufacturers Association*



United Nations Global Compact



Fundació  
Fòrum  
Universal  
de les  
Cultures

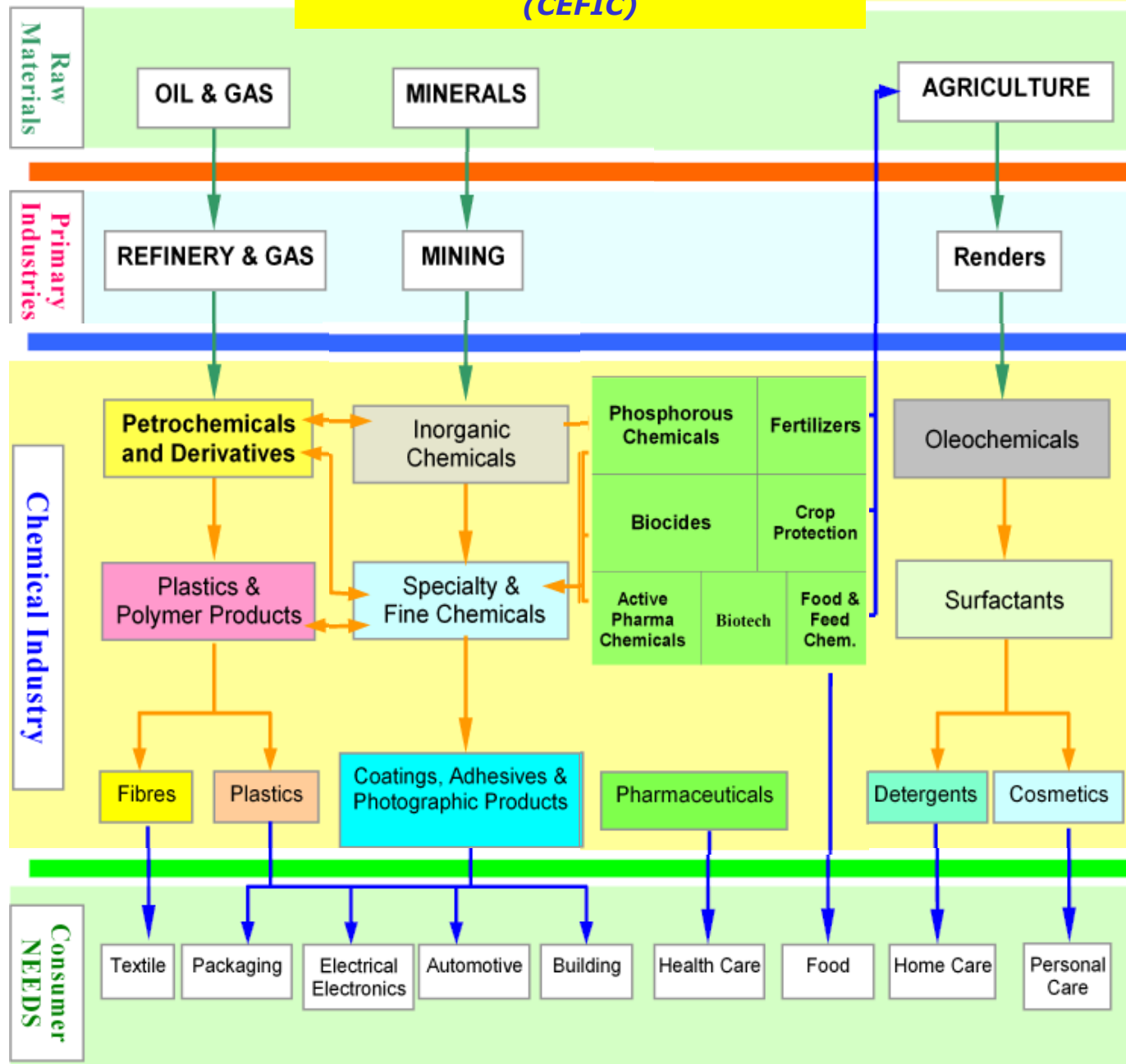
VII. ANNUAL LOCAL NETWORKS FORUM

Sabancı Headquarters

Istanbul, Turkey

9 June 2009

# CHEMICAL INDUSTRY (CEFIC)





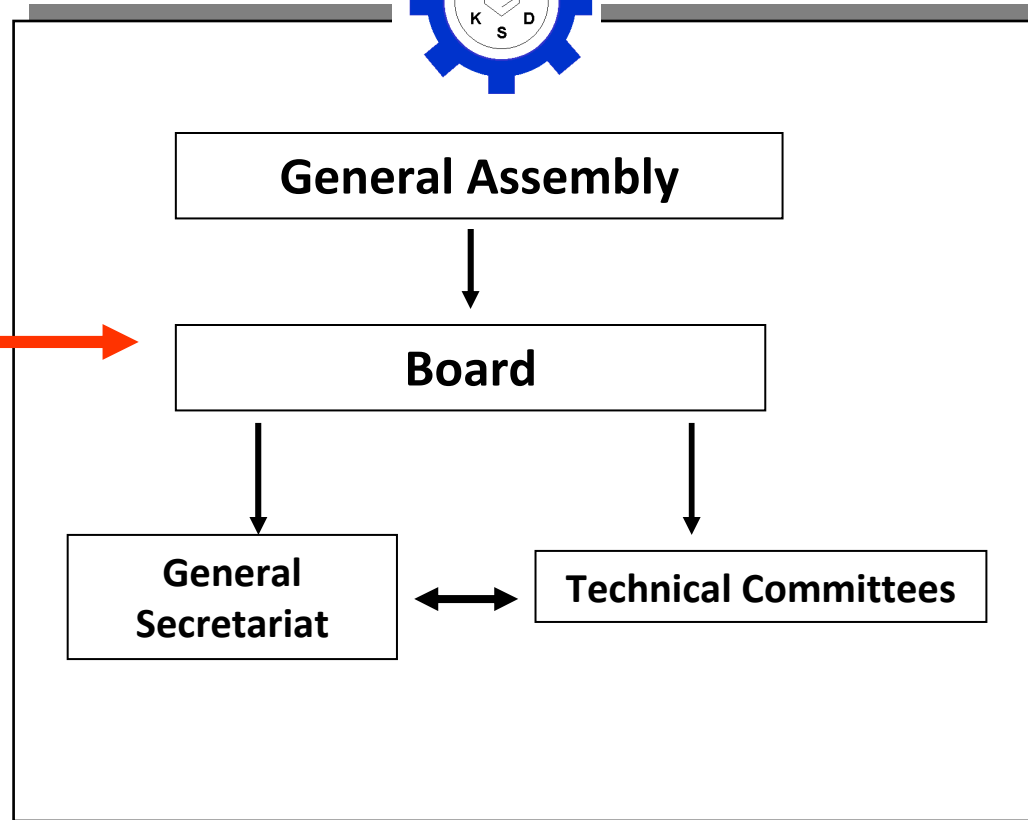
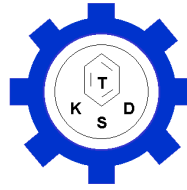
# Turkish Chemical Manufacturers Association

*Türkiye Kimya Sanayicileri Derneği*

- **TCMA was established in 1986**
- **Members are private sector companies and PETKİM, a petro-chemical company** (*recently privatized*)
  - **Currently, the number of members is 65, representing approx. 60% of the Turkish chemical sector turnover.**
- **Full member of CEFIC** (*European Chemical Industry Council*).
- **Coordinates the Responsible Care<sup>®</sup> initiative in Turkey since 1993.**



# TCMA Organization



- Chambers of Industry
- NGO Platforms
- Public/Media Relations

- Ministry of Environment&Forestry
- Ministry of Health
- Ministry of Industry&Trade
- Ministry of Labour
- Other Authorities

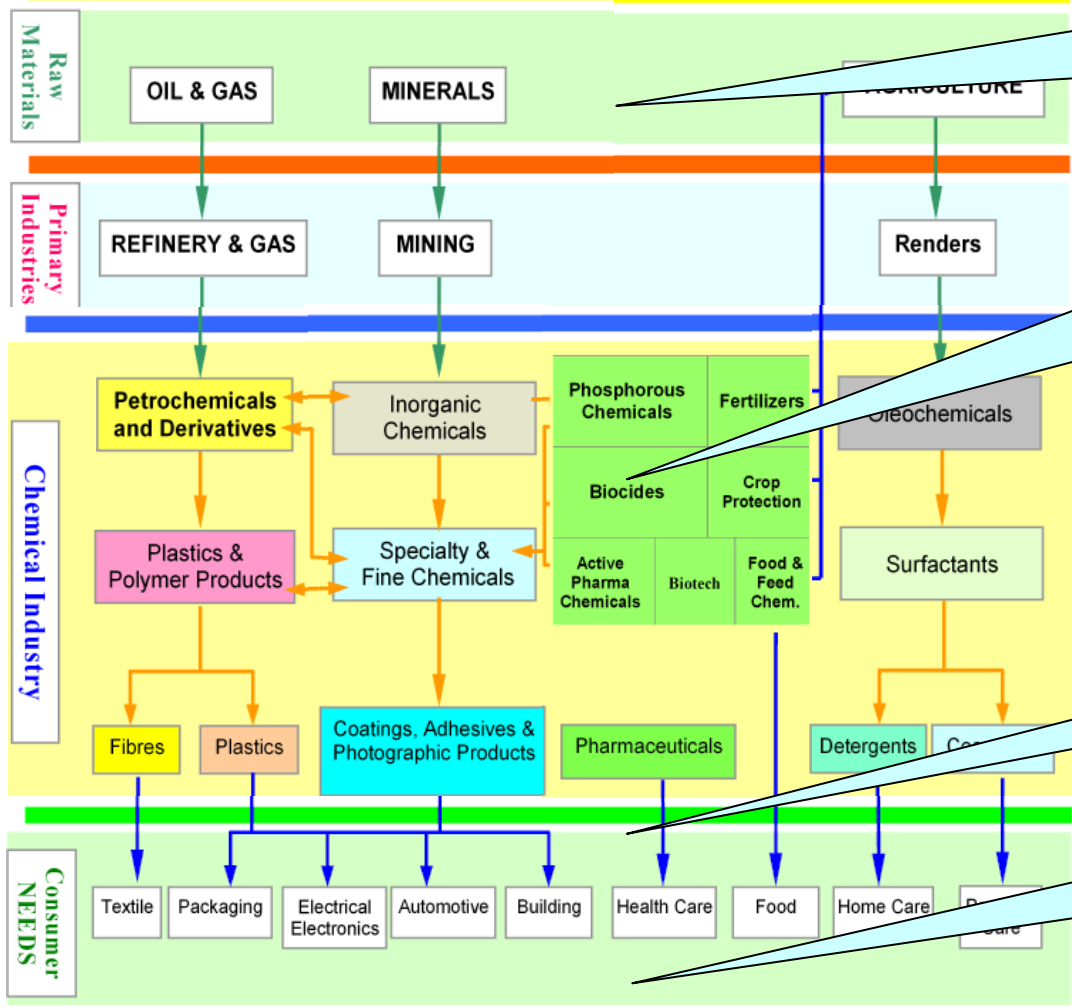
# Turkish Chemical Manufacturers Association **Members**

Product	Number of Companies
Pharmaceuticals raw and finished products	5
Paint and varnish	5
Soaps and Detergents	6
Cosmetics	1
Petrochemicals	1
Auxiliary chemicals (Textile, leather, plastic, pharma, constructions,..)	22
Bulk Stroge	2
Organic raw materials	3
Inorganic raw materials	2
Synthetic fibers	1
Synthetic resins	3
Trade companies	4
Waste recovery, recycling and treatment	3
Pesticides, herbicides,..	2
Industrial gases	2
Polyurethane products	1
Silicium Oxide and silicium products	1
Plastic packaging materials	1
<b>Total</b>	<b>65</b>

# CHEMICAL INDUSTRY

## POTENTIAL SOURCES of ENVIRONMENTAL IMPACT

### Chemical Industry



**Exploitation/Harvesting for Raw Materials**  
*USE of NATURAL RESOURCES*

- **Utilization** of Raw Materials
- **Release** of chemicals (*air, Water, soil*)
- **Generation** of *Waste* (*liquid, solid*)

- **Utilization** of Chemicals
- **Release** of chemicals (*air, Water, soil*)
- **Generation** of *Waste* (*liquid, solid*)

- **Consumption** of Goods (*by PUBLIC*)
- **Generation** of *Waste* (*by PUBLIC*)

**Management Issues:**

- Resource Usage
- Chemicals Release
- Waste Generation

# INDUSTRY and the REGULATORY Environment

## LEGAL TOOLS (Enforcement):

- International Agreements
- National Laws
  - Directives/Regulations,.....

## Technical STANDARDS:

- International
- National

(Legally Recognized)

*examples:*  
ISO 9000,  
ISO 14000  
OHSAS 18000,  
.....

COVENANTS *National Sector - specific*

## Voluntary INITIATIVES (International) (Legally Recognizable)

*example:*  
**RESPONSIBLE CARE®**  
*of the CHEMICAL INDUSTRY*



# RESPONSIBLE CARE<sup>®</sup>

- an **INDUSTRY** (*chemical*) **INITIATIVE** -



worldwide chemical industry's  
commitment

to **continual improvement** in:

- **Health, Safety and Environment performance** *of the member company operations and the products,*
- **Level of community involvement and openness in communications** *about its activities and achievements,*
- **Environmental awareness of the industry** *through self-control.*

# RESPONSIBLE CARE<sup>©</sup>

Launched in 1985 in Canada by the Canadian Chemical Producers Association (CCPA)

Coordinated by ICCA (International Council of Chemical Associations)

*Currently, implemented at 53 Countries in the World*

Coordination in Europe is managed by CEFIC (*European Council of Chemical Federations*)

***Implementation in Turkey started in 1993***

## Responsible Care Global Charter (2005)

### *Nine key elements:*

1. **Adopt Global Responsible Care Core Principles**
2. **Implement Fundamental Features** of National Responsible Care Programmes
3. **Commit to Advancing Sustainable Development**
4. **Continuously improve and report performance**
5. **Enhance the Management of Chemical Products Worldwide - Product Stewardship**
6. **Champion and facilitate the extension** of Responsible Care along the chemical industry's value chain.
7. **Actively support** national and global Responsible Care governance processes.
8. **Address stakeholder expectations** about chemical industry activities and products.
9. **Provide appropriate resources** to effectively implement Responsible Care.

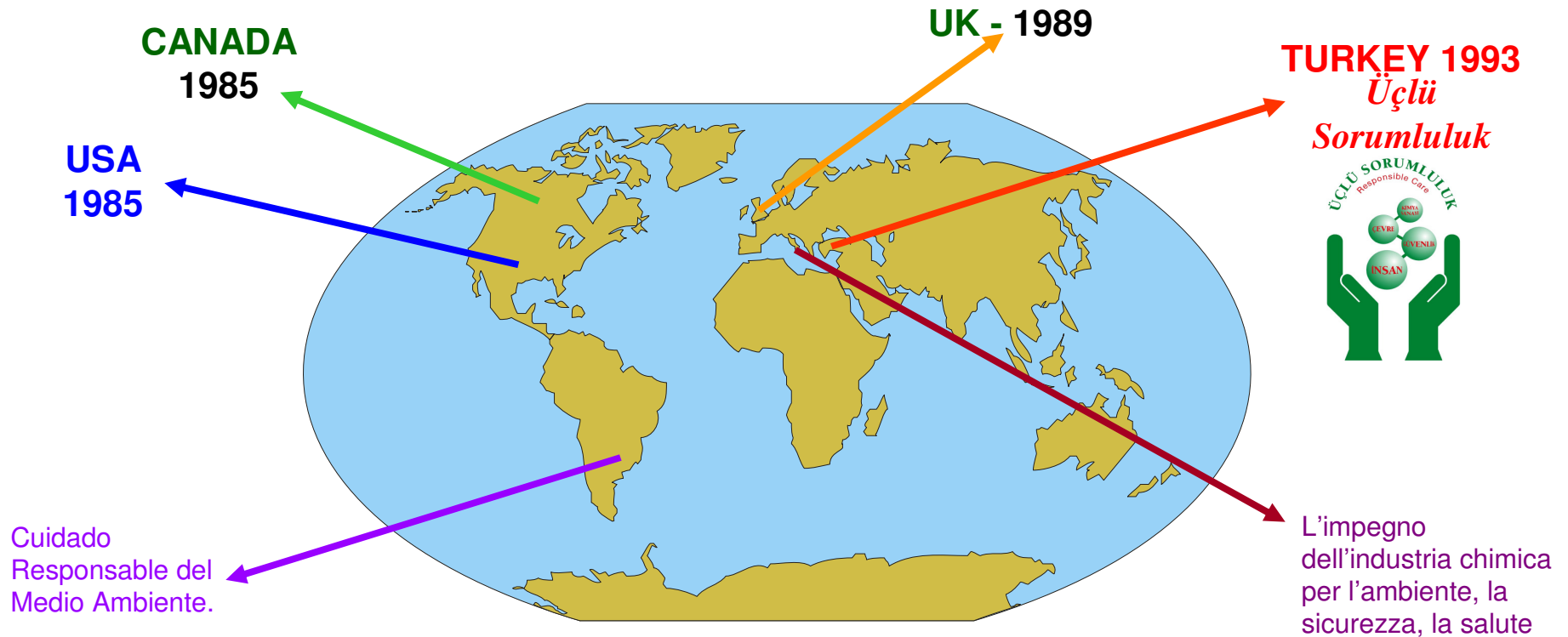
# RESPONSIBLE CARE<sup>©</sup>

## CORE PRINCIPLES

*The Global Responsible Care Core Principles commit companies and national associations to work together to:*

- **Continuously improve** the environmental, health and safety knowledge and performance of our technologies, processes and products over their life cycles so as to avoid harm to people and the environment.
- **Use resources efficiently and minimise waste.**
- **Report openly** on performance, achievements and shortcomings.
- **Listen, engage and work with people** to understand and address their concerns and expectations.
- **Cooperate with governments and organisations** in the development and implementation of effective regulations and standards, and to meet or go beyond them.
- **Provide help and advice** to foster the responsible management of chemicals by all those who manage and use them along the product chain.

# RESPONSIBLE CARE® in the World



**TURKEY 1993**  
*Üçlü Sorumluluk*



Cuidado  
 Responsable del  
 Medio Ambiente.

L'impegno  
 dell'industria chimica  
 per l'ambiente, la  
 sicurezza, la salute

- |   |                 |                    |                          |
|---|-----------------|--------------------|--------------------------|
| <b>1 ARGENTINA</b>                                      | 12 FINLAND      | 23 MALAYSIA        | 34 SLOVAK REPUBLIC       |
| 2 AUSTRALIA   | 13 FRANCE       | 24 MEXICO          | 35 SOUTH AFRICA          |
| 3 AUSTRIA   | 14 GERMANY      | 25 MOROCCO         | 36 SOUTH KOREA           |
| 4 BELGIUM   | 15 GREECE       | 26 THE NETHERLANDS | 37 SPAIN                 |
| 5 BRAZIL  | 16 HONG KONG    | 27 NEW ZEALAND     | 38 SWEDEN                |
| <b>6 CANADA</b>   | 17 HUNGARY      | 28 NORWAY          | 39 SWITZERLAND           |
| 7 CHILE   | 18 INDIA        | 29 PERU            | 40 TAIWAN - CHINA        |
| 8 COLOMBIA  | 19 INDONESIA    | 30 PHILIPPINES     | 41 THAILAND              |
| 9 CZECH REPUBLIC  | 20 IRELAND      | 31 POLAND          | <b>42 TURKEY</b>         |
| 10 DENMARK  | <b>21 ITALY</b> | 32 PORTUGAL        | <b>43 UNITED KINGDOM</b> |
| 11 ECUADOR  | 22 JAPAN        | 33 SINGAPORE       | <b>44 UNITED STATES</b>  |
| + BULGARIA, ESTONIA, SLOVENIA, LATVIA, LITHUANIA (2004) |                 |                    |                          |
| + RUSSIA (2007)   |                 |                    |                          |
| <b>TOTAL: 53 Countries</b>                              |                 |                    |                          |
| 45 URUGUAY  |                 |                    |                          |
| 46 ISRAEL   |                 |                    |                          |
| 47 VENEZUELA  |                 |                    |                          |



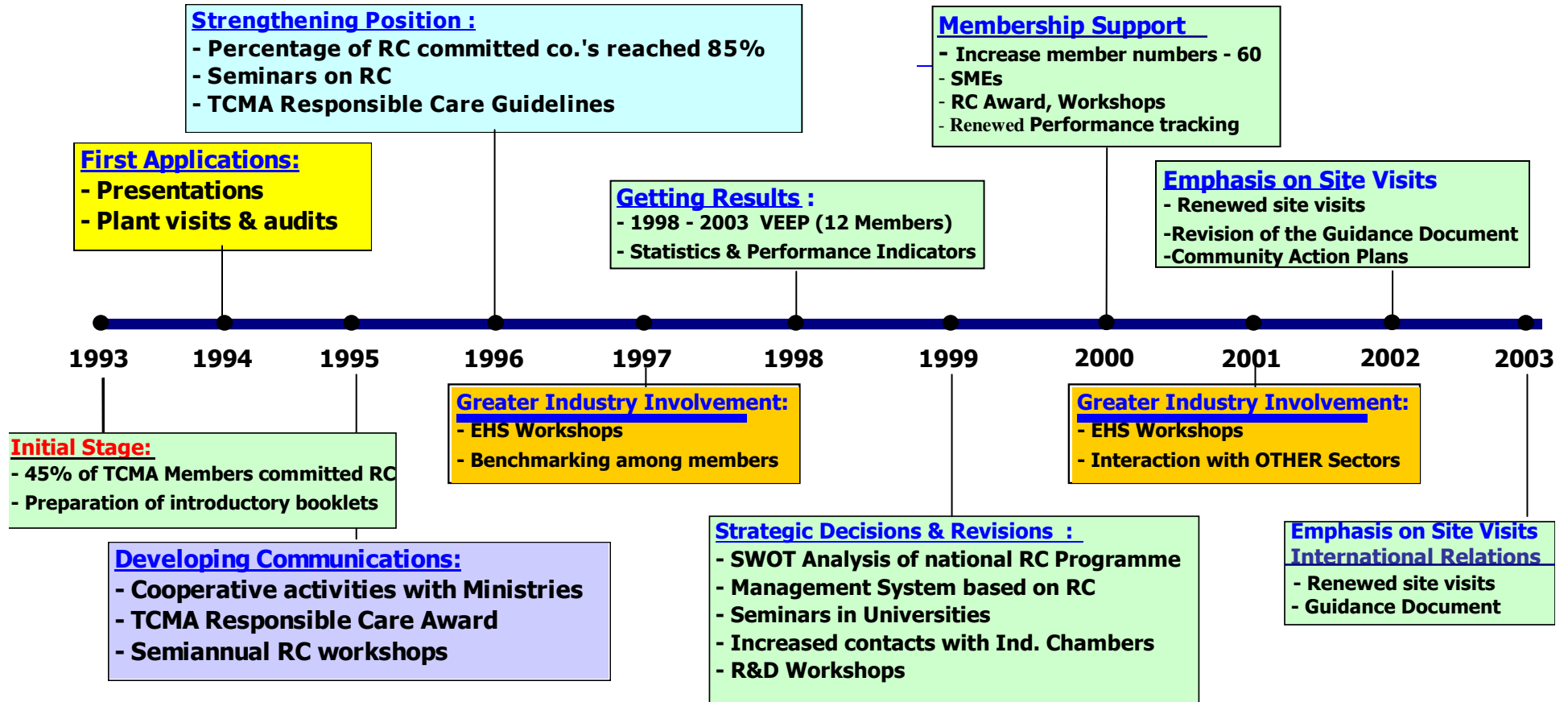
# RESPONSIBLE CARE<sup>©</sup>

## FUNDAMENTAL FEATURES

1. Formal commitment to the Guiding Principles
2. A series of codes, guidance notes, and checklists to assist companies to implement the commitment
3. Performance Indicators
4. Communications on Health, Safety and Environment matters with stakeholders
5. Forums on sharing views and exchange experiences on implementation of the commitment;
6. Adoption of a title and a logo
7. Encouragement for all member companies to commit and participate in Responsible Care
8. Systematic procedures to verify the implementation of Responsible Care by the member companies.

# TURKISH CHEMICAL MANUFACTURERS ASSOCIATION

## RESPONSIBLE CARE ACTIVITIES (1993 - )



# RESPONSIBLE CARE® - ÜÇLÜ SORUMLULUK IMPLEMENTATION STATUS in TURKEY, 2009

## 1. Formal commitment to the Guiding Principles

2. A series of codes, guidance notes, and checklists to assist companies to implement the commitment
3. Performance Indicators
4. Communications on Health, Safety and Environment matters with stakeholders
5. Forums on sharing views and exchange experiences on implementation of the commitment;
6. Adoption of a title and a logo
7. Encouragement for all member companies to commit and participate in Responsible Care
8. Systematic procedures to verify the implementation of Responsible Care by the member companies.

**FORMAL COMMITMENT** by top management of Companies  
*(Achieved at 100% level)*

*Mandatory Commitment for NEW MEMBERS*

### **RC ETHICS :**

1. Health, Safety and Environmental Policy
2. Employee Involvement
3. Experience Sharing
4. Legislators and Regulators
5. Process Safety
6. Product Stewardship
7. Resource Conservation
8. Stakeholder Engagement
9. Management Systems
10. Continual Improvement

# RESPONSIBLE CARE<sup>©</sup>

## *GUIDING PRINCIPLES - ETHICS*

### **1. Policy:**

*Health, Safety and Environmental (HS&E) policy which will reflect our commitment and be an integral part of our overall business policy.*

### **2. Employee Involvement:**

*communication and training programmes aimed at achieving that involvement and commitment.*

### **3. Experience Sharing:**

*In addition to ensuring fulfillment of the relevant statutory obligations, share experience with industry colleagues and seek to learn from and incorporate best practice into our own activities.*

### **4. Legislators and Regulators:**

*work in co-operation with legislators and regulators.*

### **5. Process Safety:**

*assess and manage the risks associated to processes.*

### **6. Product Stewardship:**

*assess the risks associated with products, ensure the risks are properly managed throughout the supply chain through stewardship programmes involving our customers, suppliers and distributors.*

### **7. Resource Conservation:**

*conserve resources and reduce waste in all activities.*

### **8. Stakeholder Engagement:**

*monitor our HS&E performance and report progress to stakeholders; listen to the appropriate communities and engage them in dialogue about our activities and our products.*

### **9. Management Systems:**

*maintain documented management systems which are consistent with the principles of Responsible Care and which will be subject to a formal verification procedure.*

### **10. Continual Improvement:**

*address the impact of current and past activities, plan for the future.*

# RESPONSIBLE CARE® - ÜÇLÜ SORUMLULUK IMPLEMENTATION STATUS in TURKEY, 2009

1. Formal commitment to the Guiding Principles
2. **A series of codes, guidance notes, and checklists to assist companies to implement the commitment**
3. Performance Indicators
4. Communications on Health, Safety and Environment matters with stakeholders
5. Forums on sharing views and exchange experiences on implementation of the commitment;
6. Adoption of a title and a logo
7. Encouragement for all member companies to commit and participate in Responsible Care
8. Systematic procedures to verify the implementation of Responsible Care by the member companies.

- **CODES of Management Practice**  
*(in-place)*
  - Community Awareness&Emergency Response
  - Process Safety
  - Distribution
  - Employee Health and Safety
  - Pollution Prevention
  - Product Stewardship
  - Security - under development (USA)
- **Guidance Notes & Checklists**  
*(in-place)*

**Self audit checklists are distributed to companies and reviewed by TKSD**  
*(improving)*

**Seminars and workshops**  
*(in-place)*

# RESPONSIBLE CARE<sup>©</sup>

## CODES (formalized procedures) of Management Practice

CODE	PURPOSE
1. <i>Community Awareness and Emergency Response</i>	to assure emergency preparedness and to foster community right-to-know.
2. <i>Process Safety</i>	to prevent fires, explosions and accidental chemical releases.
3. <i>Distribution</i>	to reduce the risk of harm posed by the distribution of chemicals to the general public; to carrier, distributor, contractor and chemical industry employees; and to the environment.
4. <i>Employee Health and Safety</i>	to protect and promote the health and safety of people working at or visiting company work sites.
5. <i>Pollution Prevention</i>	to achieve ongoing reductions in the amount of all contaminants and pollutants released to the air, water, and land.
6. <i>Product Stewardship</i>	to make health, safety and environmental protection an integral part of designing, manufacturing, marketing, distributing, using, recycling and disposing of products.
7. <i>Security (Emerging Code)</i> <i>(after 9/11 incident)</i>	to reduce and prevent outside physical threats on plant facilities

# RESPONSIBLE CARE®

## Performance Indicators

- *Safety and Occupational Health:*

- 1-Number of Fatalities
- 2-Lost time injuries Frequency Rate
- 3-Occupational Illness Frequency Rate

- *Environmental Protection:*

- *Waste Management*

- 4-Hazardous Waste Disposal
- 5-Non-hazardous Waste Disposal

- *Emissions to Air*

- 6-SO<sub>2</sub>
- 7-NO<sub>x</sub>
- 8-CO<sub>2</sub>
- 9-VOCs

- *Discharges to water*

- 10-P compounds
- 11-N compounds
- 12-COD
- 13-Heavy Metals
- 14-Other Chemicals

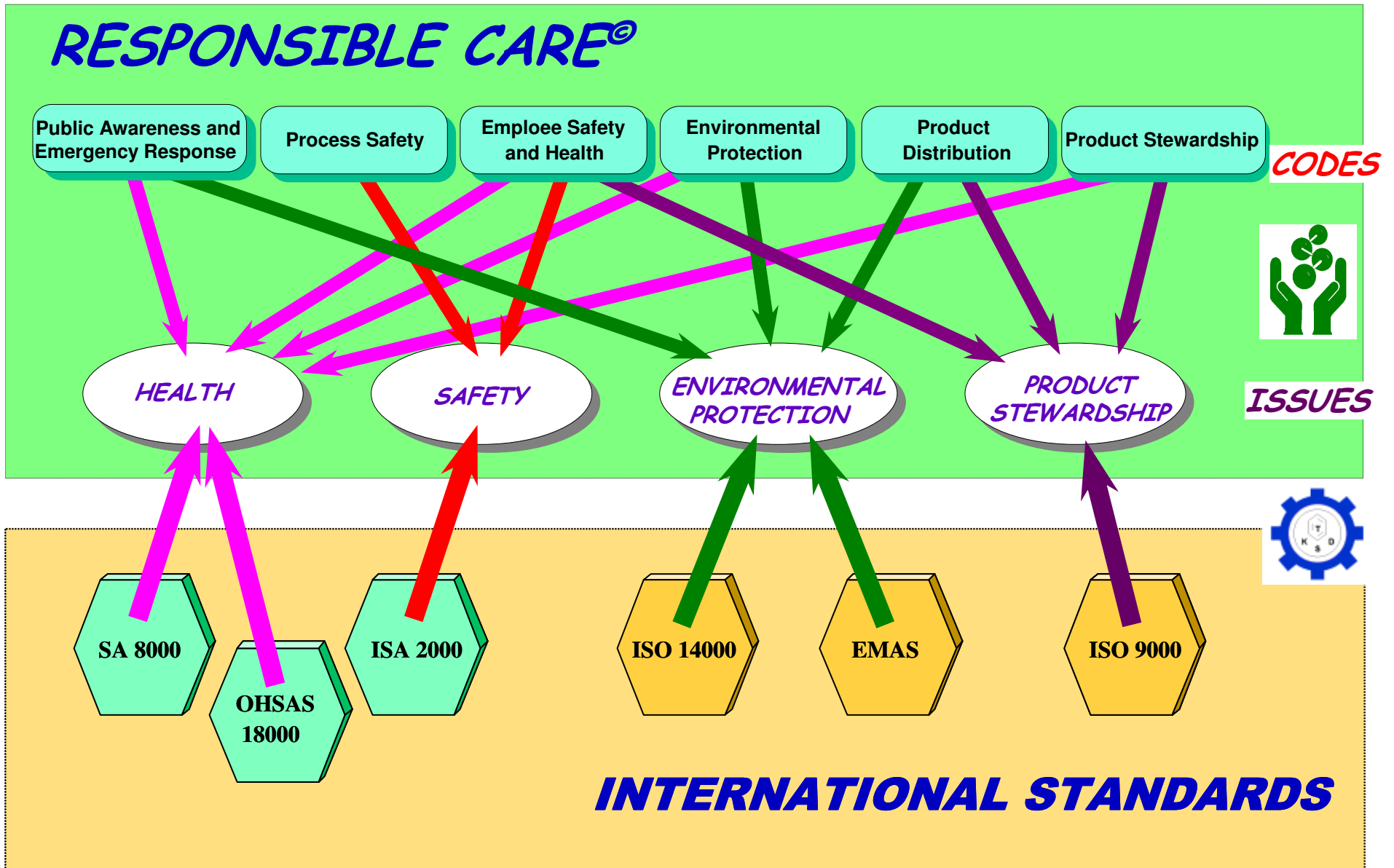
- *Use of Energy*

- 15-Energy Consumption and Energy Efficiency

- *Distribution*

- 16-Distribution Incidents

# Conceptual Relationships between RESPONSIBLE CARE<sup>®</sup> and STANDARDS



**RESPONSIBLE CARE® - ÜÇLÜ SORUMLULUK**  
**IMPLEMENTATION in TURKEY, 2009**

**RC Implementation Guidance Document**  
**and Self-audit Checklist**

*(Loose-leaf binder folder)*

**1. Management Systems**

A-1 **Company Policy**  
A-2 **Management System**

**2. Codes of Management Practice**

B-1 **Employee Health and Safety**  
B-2 **Pollution Prevention**  
B-3 **Distribution**  
B-4 **Community Awareness&Emergency Response**  
B-5 **Process Safety – Emergency Actions**  
B-6 **Product Stewardship**

**3. Applicable Regulations**

References cited on applicable Turkish Regulations related to Environment, Health and Safety

**4. Comparative Standards Table**

Cross-references to ISO 14001, ISO 9001 and OHSAS 18001

**5. Applicable EU Directives and Regulations**

Texts of applicable EU Directives and Regulations - (files on a CD)

**RESPONSIBLE CARE® - ÜÇLÜ SORUMLULUK**  
**IMPLEMENTATION STATUS in TURKEY**

**RC Implementation Guidance Document and Self-audit Checklist**  
**(SAMPLE PAGE)**

<b>A-1 COMPANY POLICY</b>					
<b>SELF-AUDIT QUESTIONS</b>		<b>Applicable Standards</b>	<b>Appl. Level</b>	<b>TARGETED TASKS - Explanations</b>	<b>TARGET DATE</b>
1.	<b><i>Is there a written Policy Document, endorsed by the Top Management, on Guiding Principles of Responsible Care?</i></b> Kuruluşunuzun, Üçlü Sorumluluk temel felsefesini kapsayan ve üst yönetim tarafından onaylanmış bir politikası var mı ?	ISO 14001 OHSAS 18001 4.2			
2.	Kuruluş politikası, yazılı olarak tüm çalışanlara iletildi mi ?	ISO 14001 OHSAS 18001 4.2			
3.	Kuruluş politikası herkese açık mı ? Taşeronlara ve diğer ilgili taraflara da iletiliyor mu ?	ISO 14001 OHSAS 18001 4.2			
4.	Kuruluş politikası çevre koruma, çalışan sağlığı ve iş güvenliği konularında sürekli gelişmeyi hedefliyor mu ?	ISO 14001 OHSAS 18001 4.2			
5.	<b><i>Is this Policy Document reviewed periodically by the Top Management?</i></b> Kuruluş politikası periyodik olarak üst yönetim tarafından gözden geçiriliyor mu ?	ISO 14001 OHSAS 18001 4.2			
6.	Kuruluş politikası, zaman içerisinde değişen yasal zorunluluklara ve ortam koşullarına göre revize ediliyor mu ?	ISO 14001 OHSAS 18001 4.2			

**RESPONSIBLE CARE® - ÜÇLÜ SORUMLULUK**  
**IMPLEMENTATION STATUS in TURKEY**

**RC Implementation Guidance Document and Self-audit Checklist**  
**(SAMPLE PAGE)**

***B-4 COMMUNICATIONS – COMMUNITY AWARENESS&EMERGENCY RESPONSE***

TOPIC	SELF-AUDIT QUESTIONS	Appl. Standards	Appl. Level	TARGETED TASKS - Explanations	TARGET DATE
5.	<b>Emergency Response Plan</b>	5.1.İşletmenizde uygulanmakta olan bir acil durum müdahale planı var mı ?	ISO 14001 4.4.7		
	5.2. <b><i>Is the Emergency Response Plan UPDATED at regular intervals?</i></b> Acil durum müdahale planı günün şartlarına uygun olarak güncelleştiriliyor mu ?	ISO 14001 4.4.2			
	5.3.Planın en az yılda bir kez uygulaması yapılıyor mu ?	ISO 14001 4.4.7			
	5.4. <b><i>Is there a Regional Area Emergency Response Plan for your Community?</i></b> Bulduğunuz bölgenin acil durum planı var mı ?	ISO 14001 4.4.7			
	5.5.Bölgesel acil durum planı yoksa hazırlanması için girişiminiz var mı ?	ISO 14001 4.4.7			
	5.6. <b><i>Is your company's Emergency Response Plan integrated into the Regional Plan?</i></b> Bölgesel acil durum planları ile eşgüdüm sağlanıyor mu ?	ISO 14001 4.4.7			

**RESPONSIBLE CARE® - ÜÇLÜ SORUMLULUK**  
**IMPLEMENTATION STATUS in TURKEY, 2009**  
***EIGHT FUNDAMENTAL FEATURES***

1. Formal commitment to the Guiding Principles
2. A series of codes, guidance notes, and checklists to assist companies to implement the commitment
- 3. Performance Indicators**
4. Communications on Health, Safety and Environment matters with stakeholders
5. Forums on sharing views and exchange experiences on implementation of the commitment;
6. Adoption of a title and a logo
7. Encouragement for all member companies to commit and participate in Responsible Care
8. Systematic procedures to verify the implementation of Responsible Care by the member companies.

**Safety and Occupational Health:**

**1-Number of Fatalities**

**2-Lost time injuries Frequency Rate**

**3-Occupational Illness Frequency Rate**

**Environmental Protection:**

**Waste Management**

**4-Hazardous Waste Disposal**

**5-Non-hazardous Waste Disposal**

**Emissions to Air**

**6-SO<sub>2</sub>**

**7-NO<sub>x</sub>**

**8-CO<sub>2</sub>**

**9-VOCs**

**Discharge to water**

**10-P compounds**

**11-N compounds**

**12-COD**

**13-Heavy Metals**

**14-Other substances**

**Use of Energy**

**15-Energy Consumption and Energy Efficiency**

**Distribution**

**16-Distribution Incidents**

***PERFORMANCE CRITERIA***

**Tracking of  
PERFORMANCE INDICATORS**

*(on annual basis)*

**Continuing!**

**Room for Improvement : Getting the company data ON TIME**

***is (still) a PROBLEM !***

**REPORTED DATA DO NOT REPRESENT ALL  
OF THE MEMBER COMPANIES.**

**RESPONSIBLE CARE® - ÜÇLÜ SORUMLULUK**  
**IMPLEMENTATION STATUS in TURKEY, 2009**  
***EIGHT FUNDAMENTAL FEATURES***

1. Formal commitment to the Guiding Principles
2. A series of codes, guidance notes, and checklists to assist companies to implement the commitment
3. Performance Indicators
4. **Communications on Health, Safety and Environment matters with stakeholders**
5. Forums on sharing views and exchange experiences on implementation of the commitment;
6. Adoption of a title and a logo
7. Encouragement for all member companies to commit and participate in Responsible Care
8. Systematic procedures to verify the implementation of Responsible Care by the member companies.

•**Press Releases on issues**

•**Articles in Newspapers**

•**Talk shows on radio and TV**

•**Inform interested Individuals**

***!! NEED IMPROVEMENT  
in COMMUNICATION  
EFFECTIVENESS !!***

**RESPONSIBLE CARE® - ÜÇLÜ SORUMLULUK**  
**IMPLEMENTATION STATUS in TURKEY, 2009**  
***EIGHT FUNDAMENTAL FEATURES***

1. Formal commitment to the Guiding Principles
2. A series of codes, guidance notes, and checklists to assist companies to implement the commitment
3. Performance Indicators
4. Communications on Health, Safety and Environment matters with stakeholders
5. **FORUMS** on sharing views and exchange experiences on implementation of the commitment;
6. Adoption of a title and a logo
7. Encouragement for all member companies to commit and participate in Responsible Care
8. Systematic procedures to verify the implementation of Responsible Care by the member companies.

**•RC WORKING GROUP :**

*16 members- meeting monthly*

**•Workshops and Seminars :**

*2 annual meetings*

*Attendance to Industry Conferences*

**•Association BULLETIN :**

*Quarterly - (mailed at-large)*

**•Open FORUM on TKSD Website :**

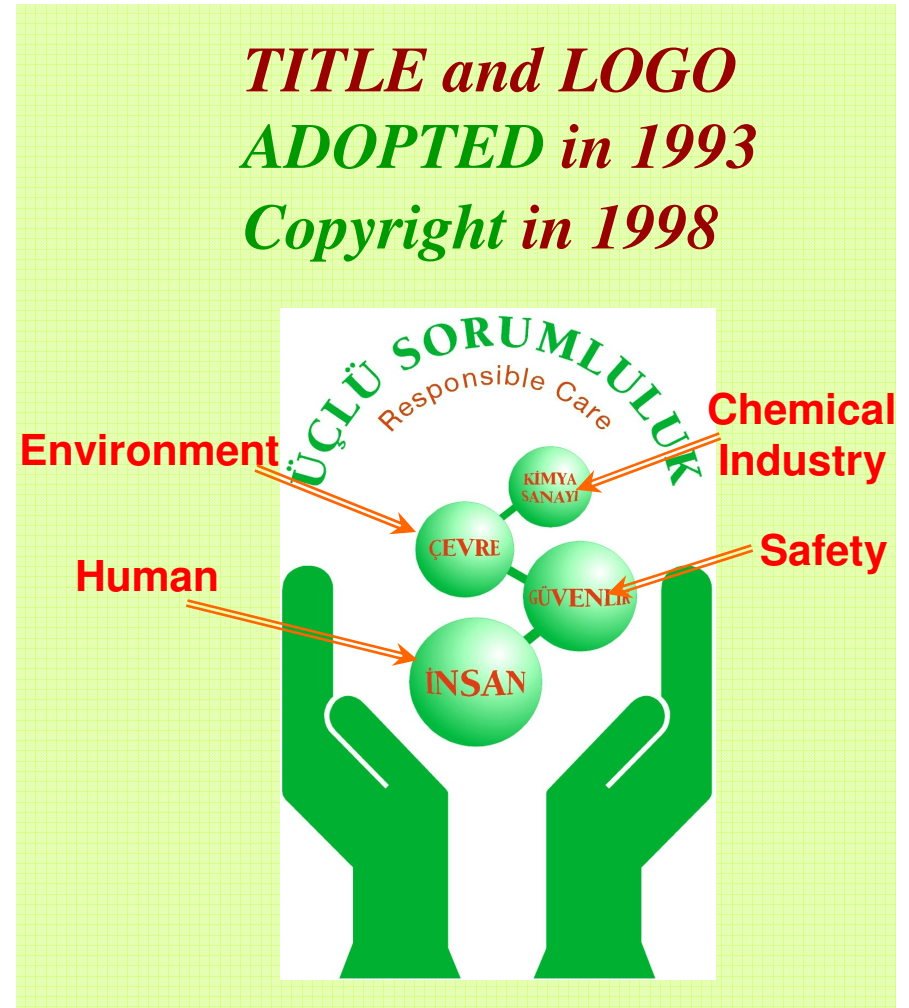
*Open to Members (initiating)*

**•Attendance to CEFIC WORKSHOPS**

# RESPONSIBLE CARE® - ÜÇLÜ SORUMLULUK IMPLEMENTATION STATUS in TURKEY, 2009

## *EIGHT FUNDAMENTAL FEATURES*

1. Formal commitment to the Guiding Principles
2. A series of codes, guidance notes, and checklists to assist companies to implement the commitment
3. Performance Indicators
4. Communications on Health, Safety and Environment matters with stakeholders
5. Forums on sharing views and exchange experiences on implementation of the commitment;
- 6. Adoption of a title and a logo**
7. Encouragement for all member companies to commit and participate in Responsible Care
8. Systematic procedures to verify the implementation of Responsible Care by the member companies.



**RESPONSIBLE CARE® - ÜÇLÜ SORUMLULUK**  
**IMPLEMENTATION STATUS in TURKEY, 2009**  
***EIGHT FUNDAMENTAL FEATURES***

1. Formal commitment to the Guiding Principles
2. A series of codes, guidance notes, and checklists to assist companies to implement the commitment
3. Performance Indicators
4. Communications on Health, Safety and Environment matters with stakeholders
5. Forums on sharing views and exchange experiences on implementation of the commitment
6. Adoption of a title and a logo
- 7. Encouragement for all member companies to commit and participate in Responsible Care**
8. Systematic procedures to verify the implementation of Responsible Care by the member companies.

- **RC Commitment is MANDATORY for NEW members**

**RESPONSIBLE CARE® - ÜÇLÜ SORUMLULUK**  
**IMPLEMENTATION STATUS in TURKEY, 2009**  
***EIGHT FUNDAMENTAL FEATURES***

1. Formal commitment to the Guiding Principles
2. A series of codes, guidance notes, and checklists to assist companies to implement the commitment
3. Performance Indicators
4. Communications on Health, Safety and Environment matters with stakeholders
5. Forums on sharing views and exchange experiences on implementation of the commitment;
6. Adoption of a title and a logo
7. Encouragement for all member companies to commit and participate in Responsible Care
8. **Systematic procedures to verify the implementation of Responsible Care by the member companies.**

**VERIFICATION APPROACH USED :**

**Performance Indicators** (*Filled by the Companies*)

**Self Audit Booklet** (*Filled by the Companies*)

**Site Visits** (*TKSD Staff Evaluation Criteria list*) :

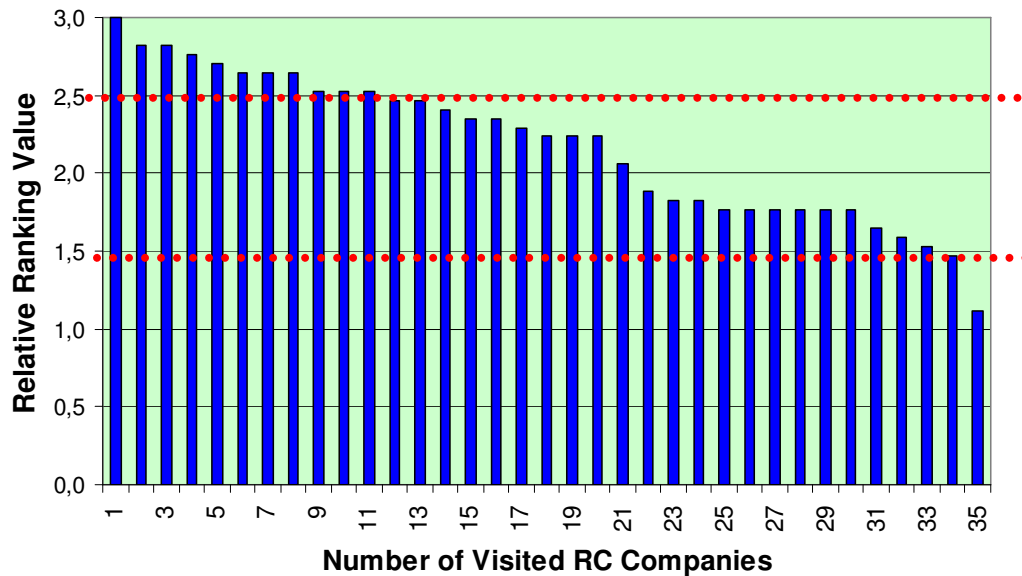
- Staff attendance to on-site RC meetings
- Establishment of RC workgroups at the plant
- Overall plant safety&environmental aspects
- Fire protection and fighting equipment
- Fire fighting trainings and exercises
- Occupational health and safety records
- Occupational health&safety equipment&personnel
- Management of hazardous chemicals
- Emissions, reports and official permits
- Wastewater and treatment systems, official permits
- Non-hazardous waste treatment and disposal
- Management of hazardous waste
- Efficient use of energy and raw materials
- Social effects - traffic, transportation, noise
- Cooperation with governmental authorities
- Social responsibility, RC related sponsorships
- ISO Standards (ISO 9000, 14000)

# RESPONSIBLE CARE® - ÜÇLÜ SORUMLULUK IMPLEMENTATION STATUS in TURKEY

## VERIFICATION

### *Evaluation of RC Performance of the Member Companies by the Turkish Chemical Manufacturers Association*

Relative RC Ranking of  
Visited Member Company Facilities



Ranking  
Criteria

**3.0: Excellent Implementation**  
**2.0 : Improving**  
**1.0 : Needs Improvement**

### Site Ranking Criteria for the Facility Visits (Fulfillment Observed in declining Order)

- Staff attendance to on-site RC meetings
- **Non-hazardous waste treatment and disposal**
- **Management of hazardous chemicals**
- **Fire protection and fighting equipment**
- **Overall plant safety&environmental aspects**
- **Fire fighting trainings and exercises**
- Establishment of RC workgroups in the plant
- Social effects - traffic, transportation, noise
- Social responsibility, RC related sponsorships
- Cooperation with governmental authorities
- **Occupational health&safety equipment&personnel**
- **Emissions, reports and official permits**
- **Wastewater treatment systems, official permits**
- **Occupational health and safety records**
- Efficient use of energy and raw materials
- **Management of hazardous waste**
- ISO Standards (ISO 9000, 14000)

# RESPONSIBLE CARE<sup>®</sup> - ÜÇLÜ SORUMLULUK IMPLEMENTATION STATUS in TURKEY, 2009

*Self-Evaluation of RC Performance of the Member Companies  
by the Turkish Chemical Manufacturers Association*

## CODES of Management Practice

*TKSD self-rating*

- |  |     |
|--|-----|
| • Community Awareness & Emergency Response | %80 |
| • Process Safety                           | %80 |
| • Distribution                             | %55 |
| • Employee Health and Safety               | %90 |
| • Pollution Prevention                     | %70 |
| • Product Stewardship                      | %65 |

**Please Note:** *The percentages given above are subjective values. The intent is to highlight the areas of perceived continual improvement in the Turkish RC Implementation.*

**RESPONSIBLE CARE® - ÜÇLÜ SORUMLULUK**  
**IMPLEMENTATION STATUS in TURKEY, 2009**



***CONTINUAL IMPROVEMENT***

**- ON-GOING ACTIVITIES -**

- **Efficient use of information technology & Internet for communication**
- **Involve the SME's in Responsible Care commitment**
- **Improve communications with Members, Government Authorities and stakeholders**
- **Include RC in university programmes of Chemical, Environmental Eng. Departments**
- **Responsible Care Award program (bi-annual)**
- **Integration of Product Stewardship principles into management systems**
- **Improve Process Safety Code Implementation**

**Turkish Chemical Manufacturers Association**  
***Türkiye Kimya Sanayicileri Derneği***

**RESPONSIBLE CARE<sup>©</sup> - ÜÇLÜ SORUMLULUK<sup>©</sup>**

**Implementation Policy**

- **Encourage all Chemical Sector Companies to JOIN**
- **Tell them:**
  - **it is OK, even if they think "THEY ARE NOT READY"**
  - **We all work together "TO OVERCOME PROBLEMS "**

**and, IT WORKS !!!!**

# FURTHERING OF "RESPONSIBLE CARE®"

TURKISH CHEMICAL MANUFACTURERS ASSOCIATION

**believes that success in**  
**"RESPONSIBLE CARE®" IMPLEMENTATION lies in**

**effective communication of the Guiding Principles**  
**to the national industry community**

**and**

**to the National Government Authorities**  
**and to the Public**

**in proper language.**

# RESPONSIBLE CARE®



**DO IT RIGHT and SAY IT !!!!**

